



The Importance of Statistical-Geospatial Integration

Strengthening Statistical and Geospatial Integration
“The SDGs Geospatial Roadmap and the GSGF Implementation Guide”

Tuesday, 2 August 2022

2:30 pm - 3:55 pm

United Nations Headquarters, New York

Moderated by: Lorraine McNerney, Ireland



Rialtas na hÉireann
Government of Ireland

The Importance of Statistical-Geospatial Integration - Ireland's experience

Lorraine McNerney, CIO Ordnance Survey Ireland

Ireland's geo-statistical partnership for Agenda 2030 Commitments

Policy and Stakeholder Co-ordination



Roinn Cumarsáide, Gníomhaithe
ar son na hAeráide & Comhshaoil
Department of Communications,
Climate Action & Environment

Geospatial Data and GeoHive Platform



Statistics and Data Governance



2030 Agenda: goals, targets, indicators - and data!



GeoHive - Ireland's UN SDG Reporting Platform




Rialtas na hÉireann
Government of Ireland



Then... refocusing the SDG team to COVID-19

Full-screen Snip

Coronavirus COVID-19



If you have fever and/or cough you should stay at home regardless of your travel or contact history.

How to Prevent

- Wash**
your hands well and often to avoid contamination
- Cover**
your mouth and nose with a tissue or sleeve when coughing or sneezing and discard used tissue
- Avoid**
touching eyes, nose, or mouth with unwashed hands
- Clean**
and disinfect frequently touched objects and surfaces
- Stop**
shaking hands or hugging when saying hello or greeting other people
- Distance**
yourself at least 2 metres (6 feet) away from other people, especially those who might be unwell

All people are advised to:

- > **Reduce** social interactions
- > **Keep a distance** of 2m between you and other people
- > **Do not** shake hands or make close contact where possible

If you have symptoms visit hse.ie
OR phone HSE Live **1850 24 1850**

Symptoms

- > Fever (High Temperature)
- > A Cough
- > Shortness of Breath
- > Breathing Difficulties



Affected Regions

Check the list of affected regions on www.hse.ie

For Daily Updates Visit

www.gov.ie/health-covid-19
www.hse.ie

Ireland is operating a containment strategy in line with WHO and ECDC advice



Rialtas na hÉireann
Government of Ireland

Foundations of Ireland's approach – applying existing frameworks

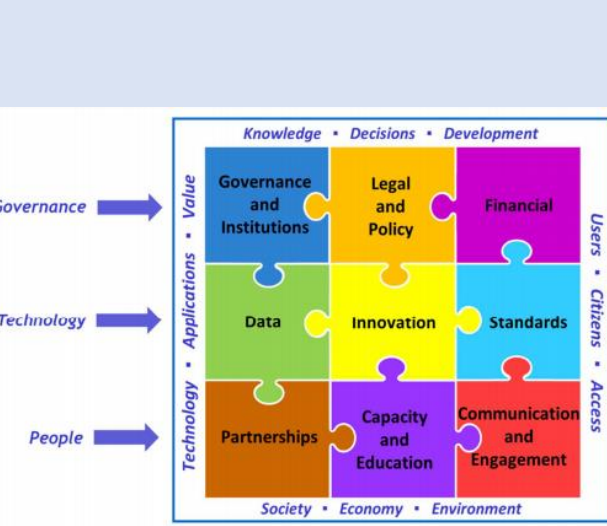
Generic Statistical Business Process Model GSBPM



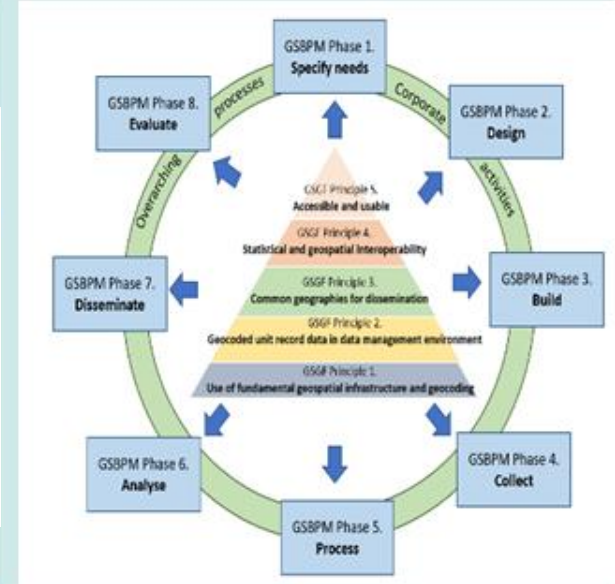
The Global Statistical Geospatial Framework GSGF



UN-GGIM's Integrated Geospatial Information Framework - IGIF



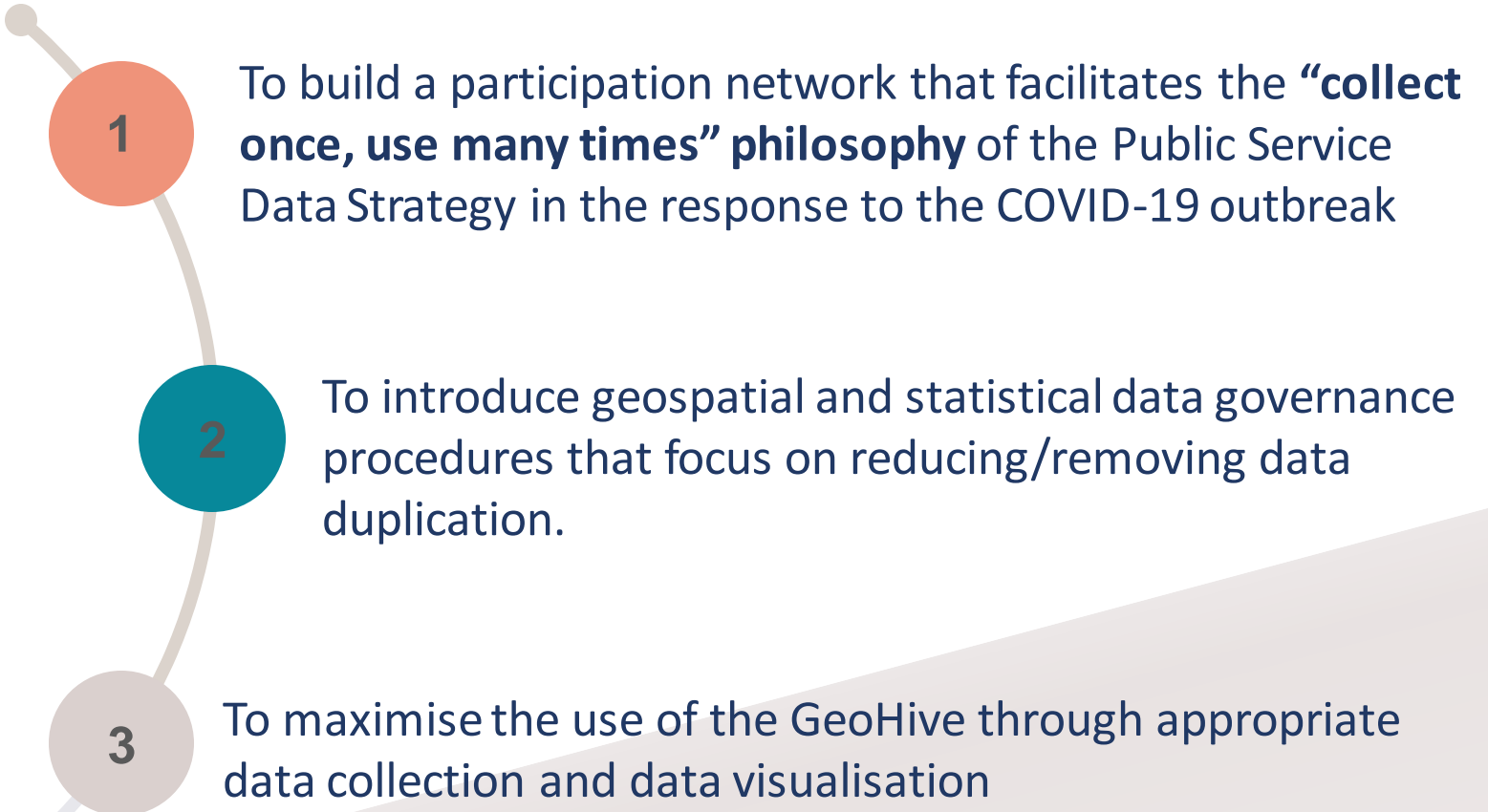
GSBPM and GSGF Principles



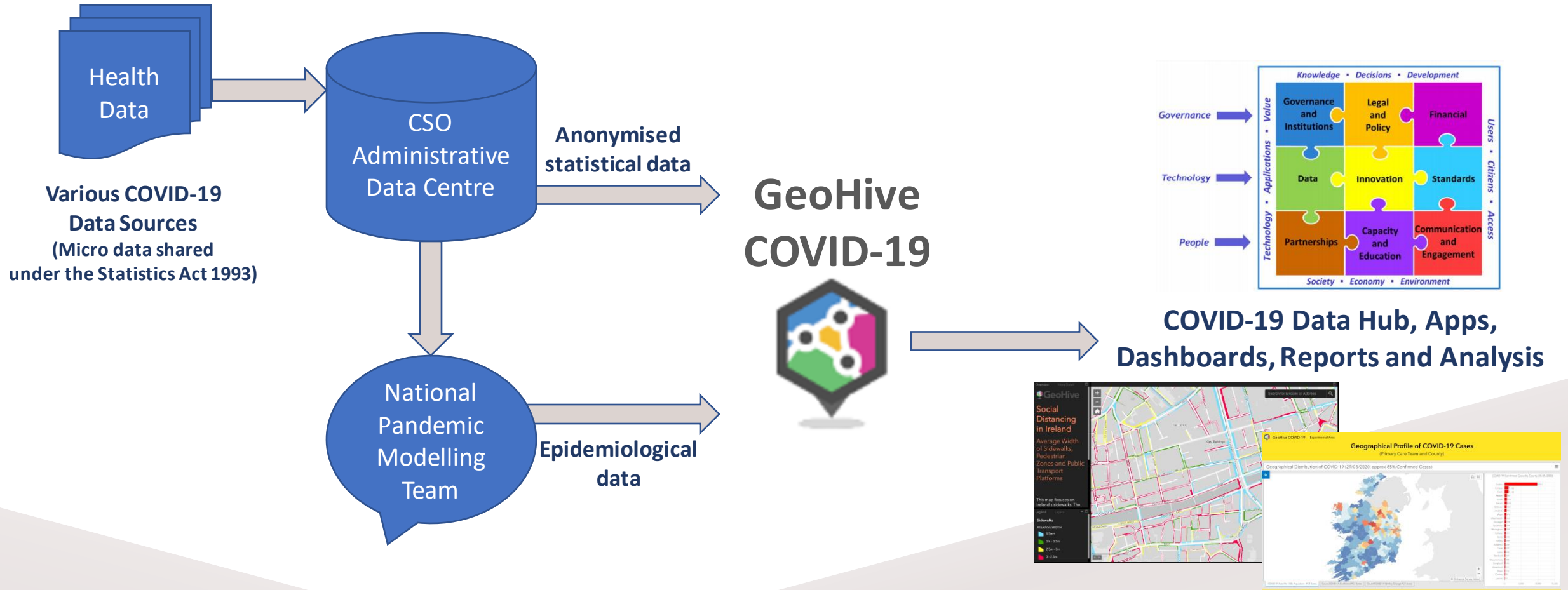
Terms of Reference, March 2020

GeoHive Covid-19 Response Coordination Group

Name	GeoHive Covid-19 Response Coordination Group
Membership	<p>The membership of this group consists of the following organisations:</p> <ul style="list-style-type: none"> • Ordnance Survey Ireland (OSi) • The Central Statistics Office (CSO) • The Department of Housing, Planning, and Local Government (DHPLG) • the All-Island Research Observatory (AIRO) • Esri Ireland. <p>The associated levels of responsibility and accountability are defined in a separate RASCI matrix.</p>
Goals for the Group	<p>The goals for this group are to:</p> <ol style="list-style-type: none"> 1. Build a participation network that facilitates the “collect once, use many times” philosophy of the Public Services Data Strategy for geo-statistical data in the response to the Covid-19 outbreak. 2. Introduce geospatial and statistical data governance procedures that focus on reducing/removing data duplication. 3. Maximise the use of the State’s geospatial hub (GeoHive) through appropriate data collection and data visualisation.
Group Working Methods	<p>The GH-COVID19-RCG meets on a daily basis with all meetings held using remote video/phone conferencing to maintain social distancing.</p> <p>The Group has established a:</p> <ul style="list-style-type: none"> • GeoHive Covid-19 response platform with public, private and secure virtual data room capabilities • Geo-statistical data governance and management sub-group to provide expertise in support of the Government’s Covid-19 response • GeoHive technical architecture sub-group to provide the expertise in support the Government’s Covid-19 response.
Group Documentation	<p>A Terms of Reference (TOR), Data Governance and Stakeholder Relationship mapping is in place to manage the governance and co-ordination of the stakeholders involved and communication channels.</p> <p>A shared programme repository has been established.</p>



COVID-19 Data Ecosystem and Data Governance



Data, infrastructure and processes

The Group established:

- ✓ GeoHive COVID-19 response platform with public/private/secure virtual data hubs
- ✓ Geo-statistical data governance and management sub-group to provide expertise in support of the national COVID-19 response
- ✓ GeoHive technical architecture sub-group to provide the expertise in support of the national COVID-19 response
- ✓ Various data led initiatives - which are summarised in the following slides



Rialtas na hÉireann
Government of Ireland



Ireland's COVID-19 Data Hub

National Statistics, Information

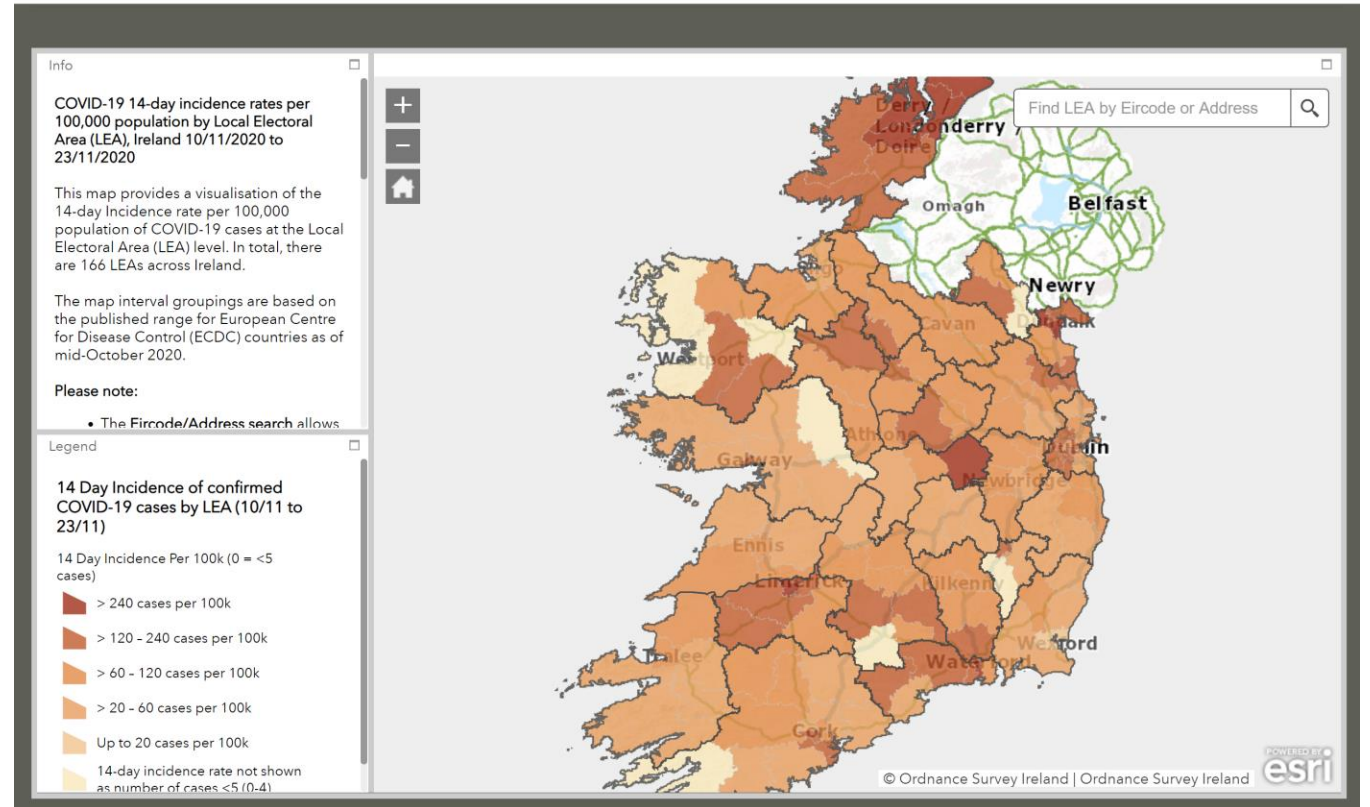
The information presented in this site is based on data from the Health Protection Surveillance Centre (HPSC) and the Health Service Executive (HSE). Data is updated in real time with newly published data. This site is built using

Confirmed Headline Figures

Click for more information

The screenshot shows the homepage of DATA.GOV.IE. At the top, there is a navigation menu with links for Home, Datasets, Publishers, Suggest Data, Showcases, Contact, About, and More. A search bar is located on the right side of the header. Below the header, a large blue banner features the text "10093 Datasets" and "117 Publishers" next to a graphic of gears and a cloud. To the right of this banner is a search bar with the text "Search Datasets..." and a red search button. Below the search bar, the text "ADVANCED SEARCH" is visible. The main heading of the banner is "IRELAND'S OPEN DATA PORTAL" with the subtext "Promoting innovation and transparency through the publication of Irish Public Sector data in open, free and reusable formats." A red button labeled "EXPLORE DATASETS" is positioned at the bottom right of the banner. Below the banner, a yellow box highlights a section for "COVID-19 Resources" with a "SHOW DATASETS" button. Below this, a grid of 12 categories is displayed, each with an icon and a label: Agriculture, Fisheries, Forestry & Food; Arts, Culture and Heritage; Justice, Legal System and Public Safety; Economy and Finance; Education and Sport; Energy; Environment; Government and Public Sector; Health; Housing and Zoning; Population and Society; Science and Technology; and Regions and Cities. At the bottom of the page, there is a blue footer with a "Subscribe to our mailing list*" section and a "Sign up" button.

Over
350
 million
 views since June 2020



**An Roinn Caiteachais
 Phoiblí agus Athchóirithe**
 Department of Public
 Expenditure and Reform



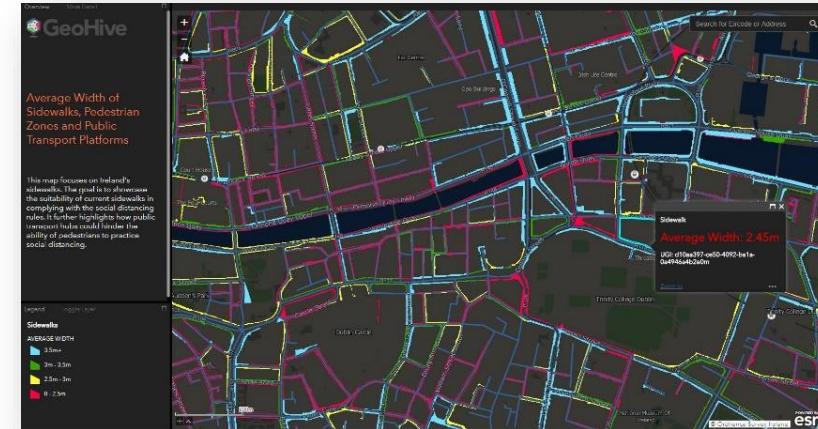
**An Roinn Tithíochta,
 Rialtais Áitiúil agus Oidhreacht**
 Department of Housing,
 Local Government and Heritage



An Roinn Sláinte
 Department of Health



Local Authority Dashboards & An Garda Síochana Data Hub



Pavement Width, Public Transport & Retails Locations

Public and secure dashboards; updated daily.
Publically available for use by all Local Authorities with a daily data supply.



Secure access for all Policing Control Room for traffic mobility and trend analysis.

Dept. of An Taoiseach business dashboards / reports



Map-based dashboard and report that displays business and retail information, showing the classification, density and size of business premises by location.



Key takeaways

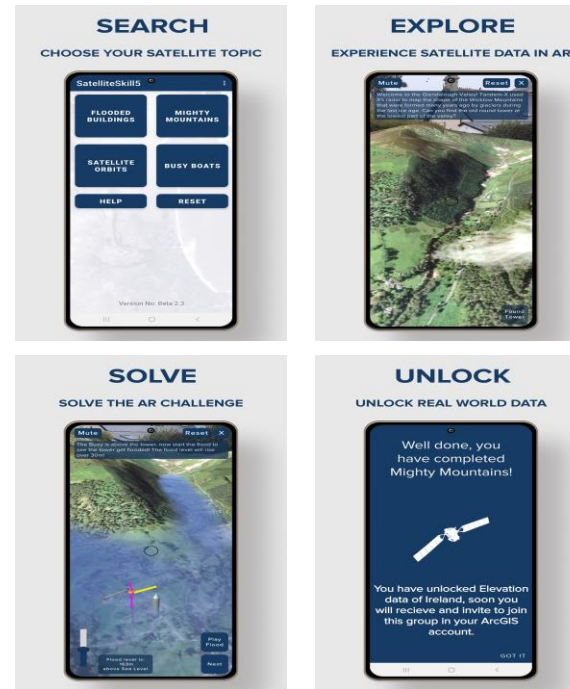
- **Geospatial data and apps** have played a key role in revealing **insights, patterns and trends** as part of the Ireland's COVID-19 response.
- Geospatial and statistical **data governance** removed duplication and enabled sharing.
- Rapid response due to **re-use of existing platform**, however there was still a significant data management overhead due to various standards used across data sources.
- Resulted in the real understanding of the **value that geospatial data and infrastructure** plays in enabling data sharing, collaboration & analysis to gain insights and to manage.
- **Significant demand for data** from citizens, academia and others.

Conclusions

- **It's all about the data.** Does it exist, is it up to date, is it accessible, who knows about it?
- **Collaboration is key.** It is easier to build quickly on existing relationships/platforms than to build new ones.
- **The race to real time is complex.** The data we use is from the past, the problems we are solving are in the future.
- **A single source of truth is essential.** Not having to debate the data allows more time to debate the policy.

5*S Partnership – Space, Surveyors, STEM, Students and the SDGs

A joint initiative providing education and outreach to over 10,000 second level students and over 25% of all secondary schools in Ireland



Delivering customised StoryMaps and an SDG Augmented Reality App to interactively engage with SDG Data using Ireland SDG Data Hub -

<https://irelandsdg.geohive.ie/>



<https://5sdiscover.maynoothuniversity.ie/>



Rialtas na hÉireann
Government of Ireland

Our Side Event today...

